

## SOLID RESOURCES

LA Sanitation (LASAN) is responsible for the collection and removal of all solid materials and waste in the City of Los Angeles. The City collects an average of 6,652 tons per day of refuse, recyclables, yard trimmings, horse manure and bulky items from more than 750,000 homes.

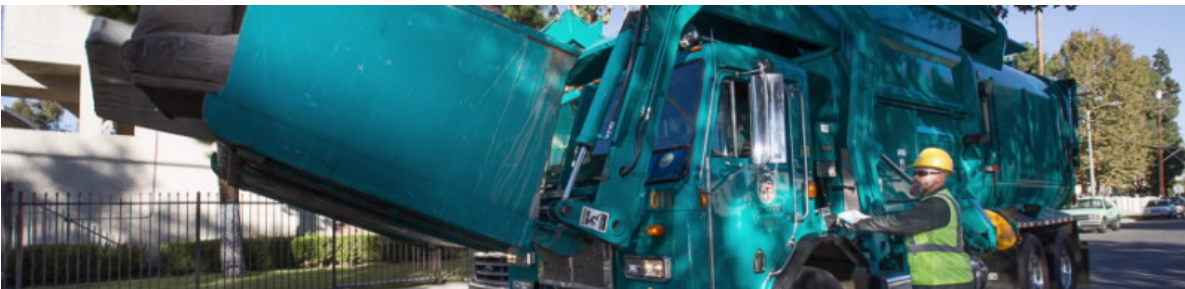
We have over 500 collection vehicles and most of them are using clean fuel. In fact, LASAN has the largest fleet of clean fuel vehicles in the United States!

The refuse goes to landfills, the recycling goes to centers that can use it to make new products, and the green waste is turned into mulch, which we give away FREE to City residents.

In addition to collecting solid waste from homes, LASAN also picks up bulky items and abandoned waste across the City. Mayor Eric Garcetti's Clean Streets LA program will add 5,000 more trashcans to the streets in addition to focusing on blighted areas across LA to clean up neighborhoods and improve quality of life.

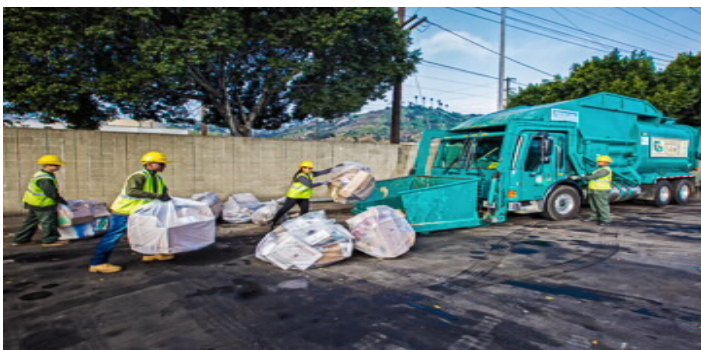
LA Sanitation is also in the process of transitioning to a new waste and recycling system for all businesses and large apartment complexes which will reduce street impacts, reduce air pollution and increase landfill diversion.... all while providing lower rates and better service.

If you have any questions about our services, please call our 24-hour Customer Care Center at [1-800-773-2489](tel:1-800-773-2489).



LASAN worker loading bulky items into truck.

## COLLECTION



LASAN collects over one million tons of refuse annually from 750,000 customers, replaces bins, and conducts maintenance and field repairs for over 750 customers daily.

[More about COLLECTION](#)

## ZERO WASTE - SWIRP

## RECYCLING



Responsible waste management is key to environmental sustainability, climate change efforts, and reducing greenhouse gases. LA is ranked top recycler out of the 10 largest U.S.

[More about RECYCLING](#)

## LIVABILITY



With LASAN leading the way, the City of Los Angeles is transitioning to a new waste and recycling system for all businesses and large apartment complexes beginning in summer 2017.

[More about ZERO WASTE - SWIRP](#)

### GREEN WASTE



Green waste such as grass, leaves and branches from your yard, as well as fruit and vegetables from the garden or market, is biodegradable and reduces the refuse sent to landfills when recycled.

[More about GREEN WASTE](#)

### SPECIAL EVENT SERVICES



Recycling at special events diverts wastes from landfills, reduces pollution, and conserves energy and natural resources. Learn how the Special Events Recycling Program (SERP) can provide recycling services at local events.

[More about SPECIAL EVENT SERVICES](#)



[More about LIVABILITY](#)

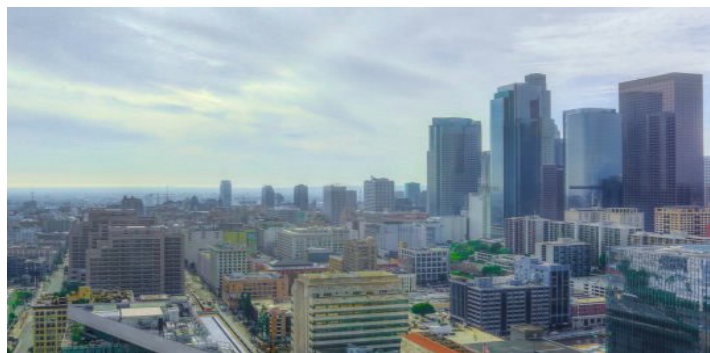
### CLARTS AND LANDFILLS



CLARTS is the City owned waste transfer station, used to temporarily store refuse before being transported to a landfill. Landfills are environmentally safe final disposal locations for

[More about CLARTS AND LANDFILLS](#)

### RecycLA



Zero Waste LA is a new public private partnership designed to address the 3-million tons of waste disposed annually by businesses, consumers and residents.

[More about RecycLA](#)